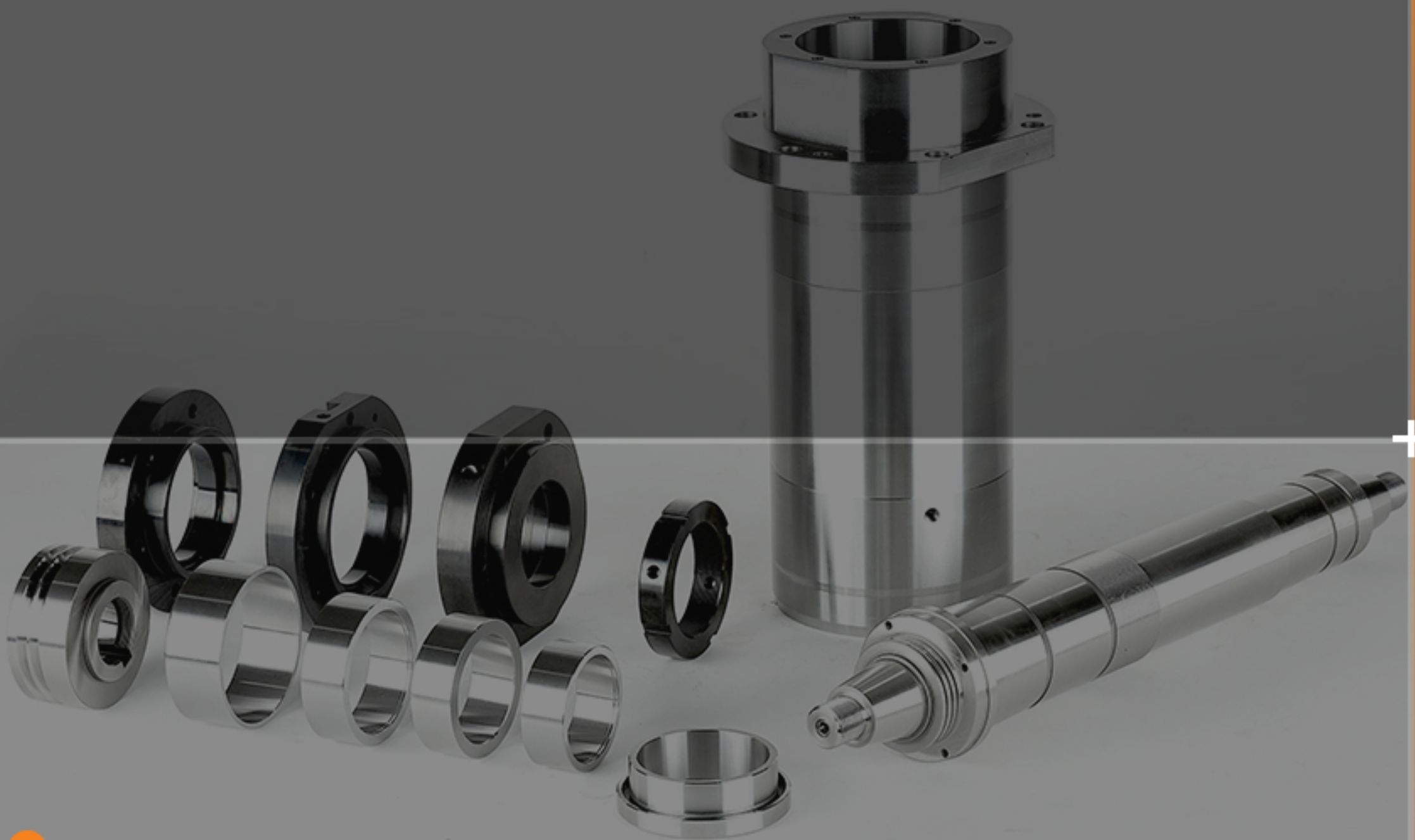


WJT MOBILE CATALOG

For the Machined Assembled Precision Parts
and Automation Equipment, Top notch Supplier



GLOBAL TECHNOLOGY



**100% export-oriented company
with a track-record of trading
with Japanese companies for several years.**

The long-term successful business track-record with Japan, United States, China, Korea with Japanese enterprises are the outcome of WJT's hard efforts towards high quality, on-time delivery and competitive price.

| WJT



**Integration power through a network
of 30 or more cooperating companies!**

We are doing business with global manufacturers of machine tools, semiconductor manufacturing equipment, Exclusive-use Machines, Printing Machines, Medical Devices, Robot Manufacturers, and more.

Manufacturing Precision Parts



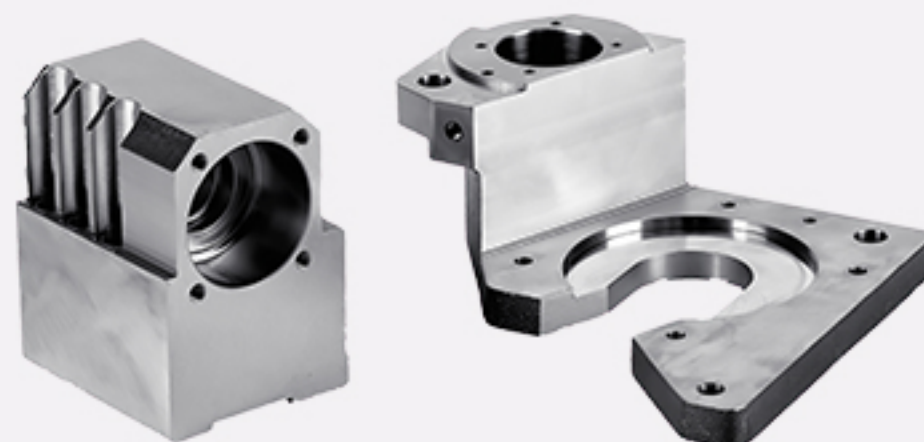
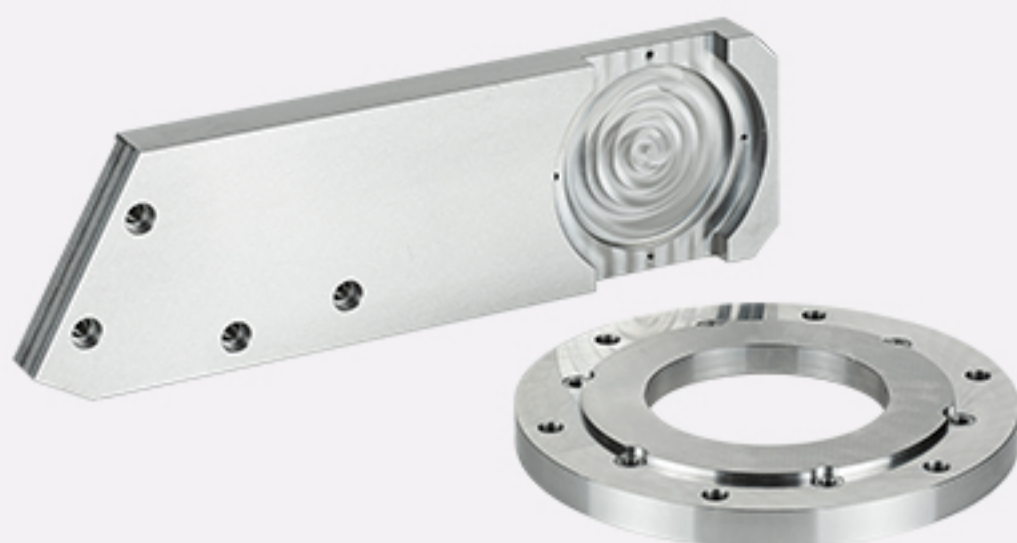
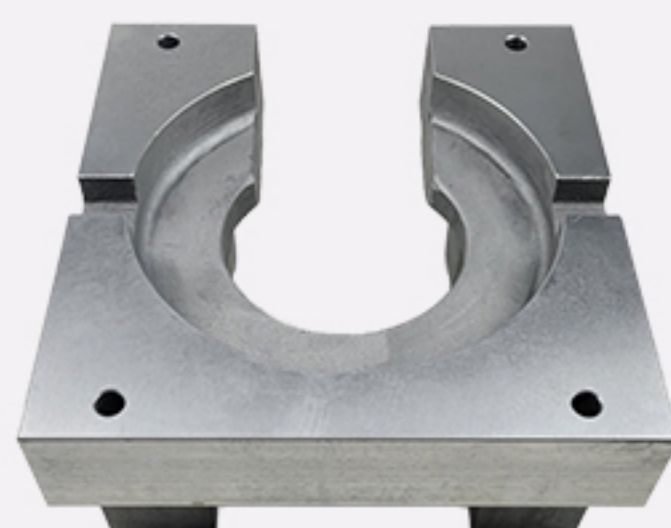
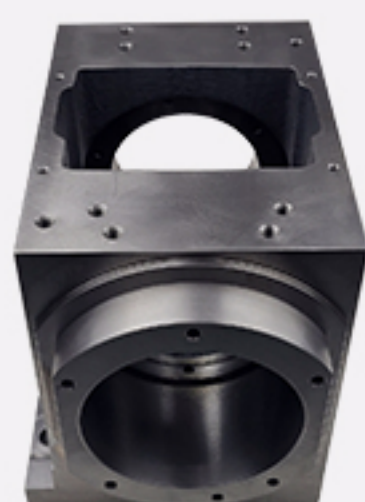
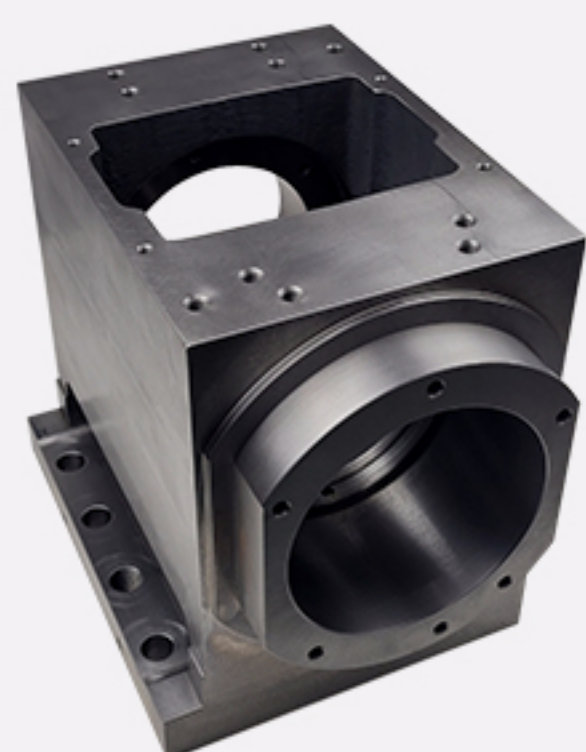
The advanced technology of manufacturing Micron Precision parts

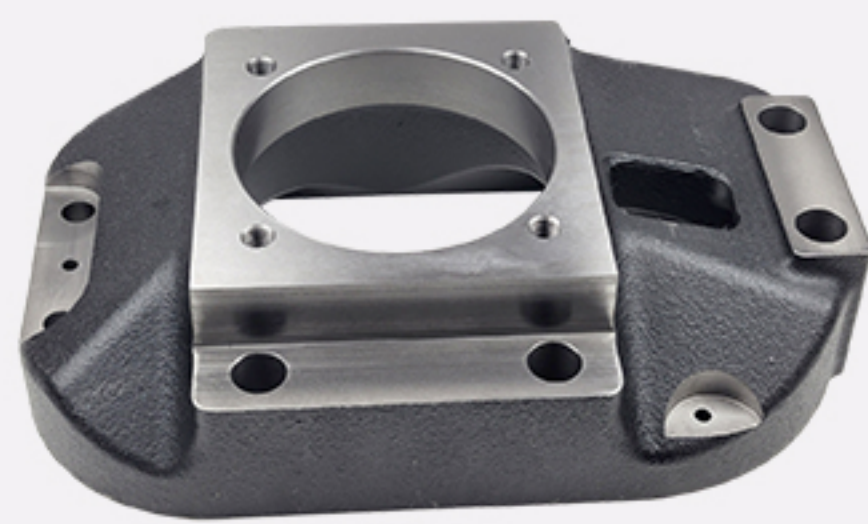
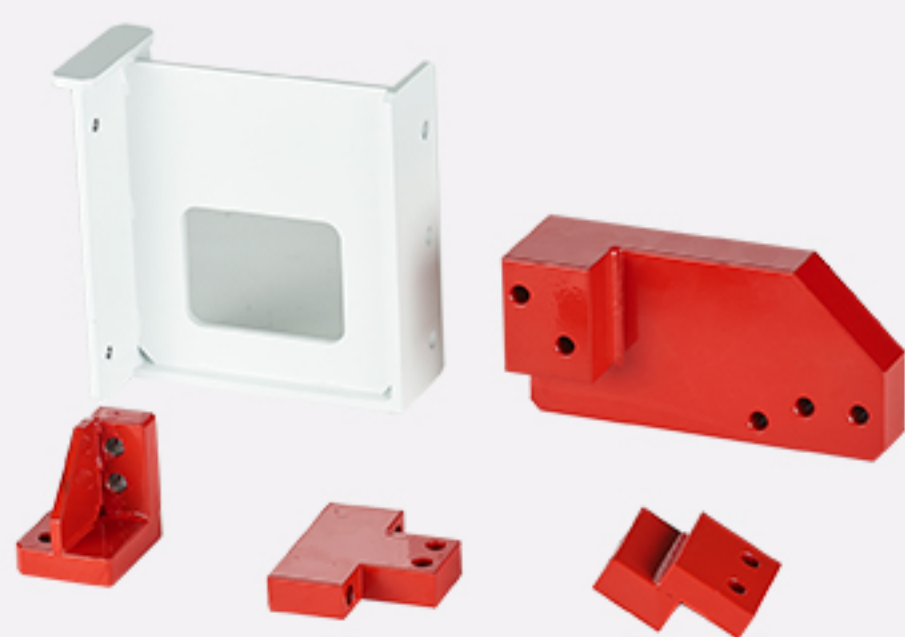
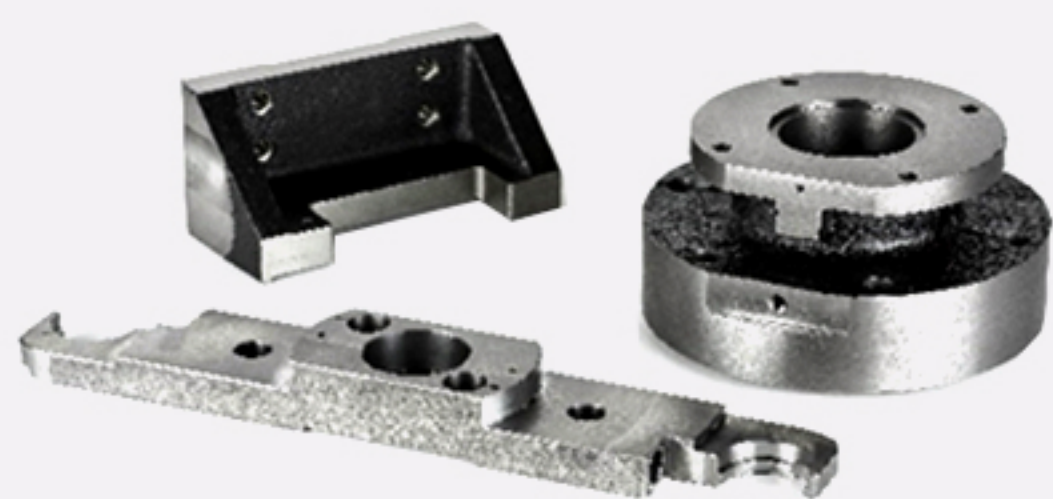
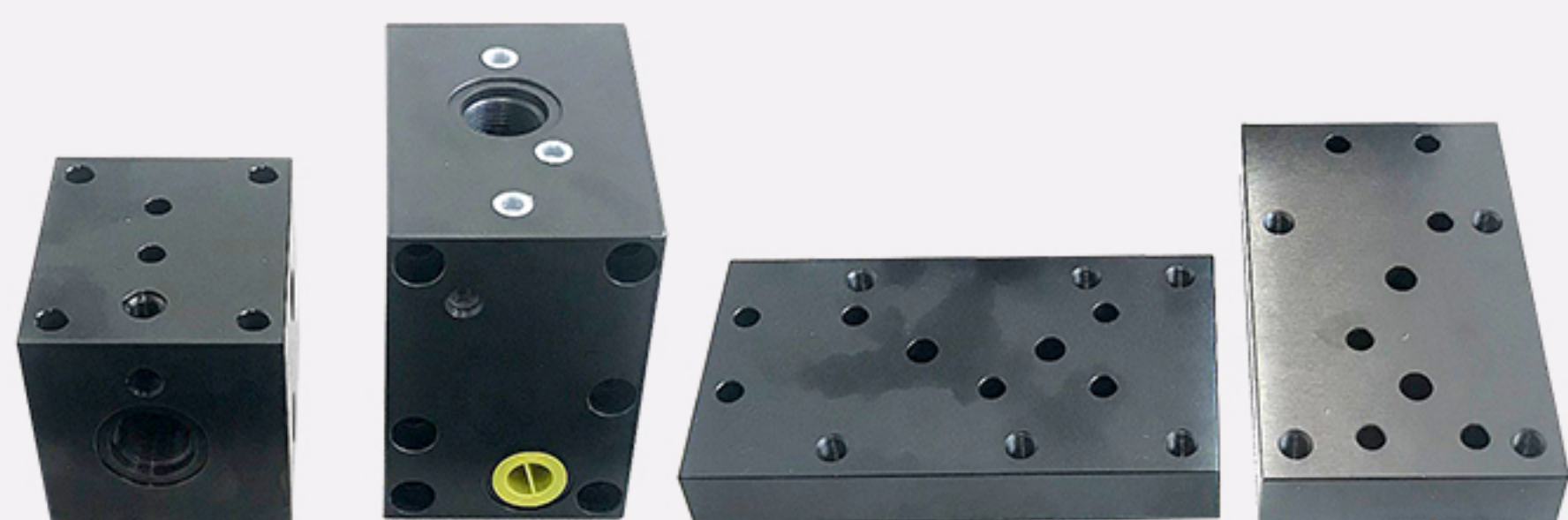
Manufacturing a variety of Precision machine parts including Machine Tools, Semiconductor-manufacturing Equipment and Exclusive-use Machines (Work Capacity: Latche $\varnothing 1,200\text{mm}$ (MAX), Four-cornered Product $1,200\text{mm} \times 1,200\text{mm}$ (MAX))

Able to work on SC, SS, SCM, SUS, AL, FC, FCD, Hard Metal, CERAMIC (regardless of material), Grinding (External/Internal Diameter, Plane), Manufacture cover for Machine Tools (SPLASH GUARD ASSY), Heat Treatment, Surface Treatments, Multi-products and Small-sized production.

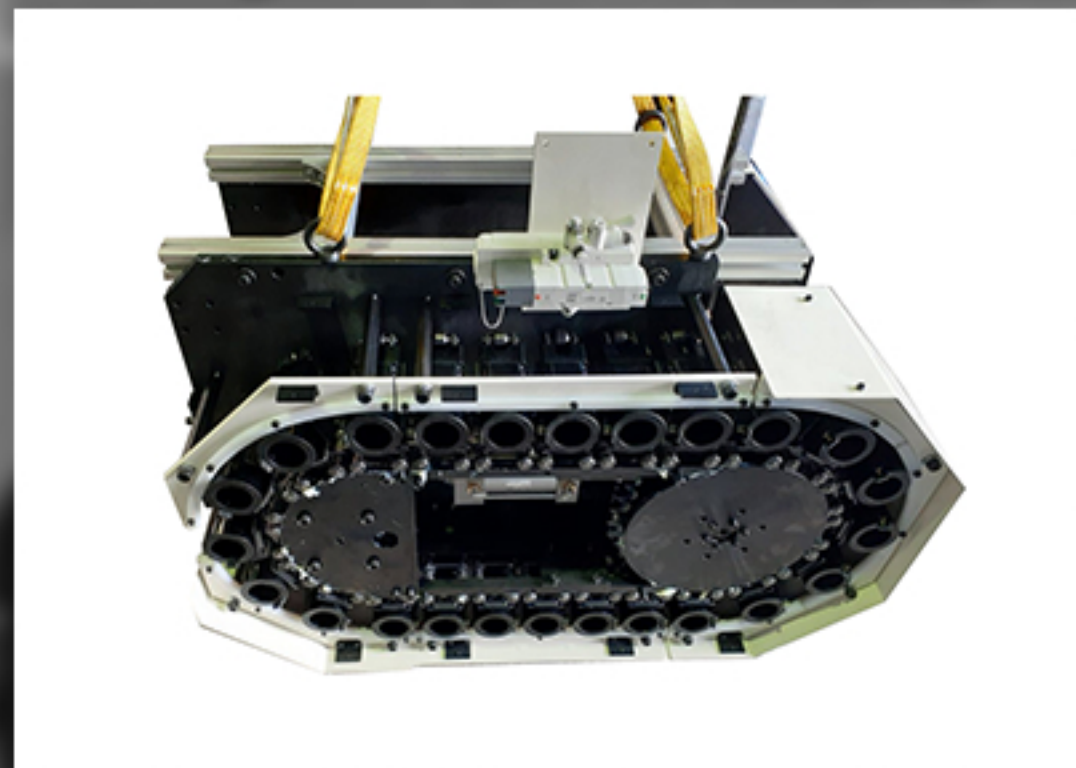
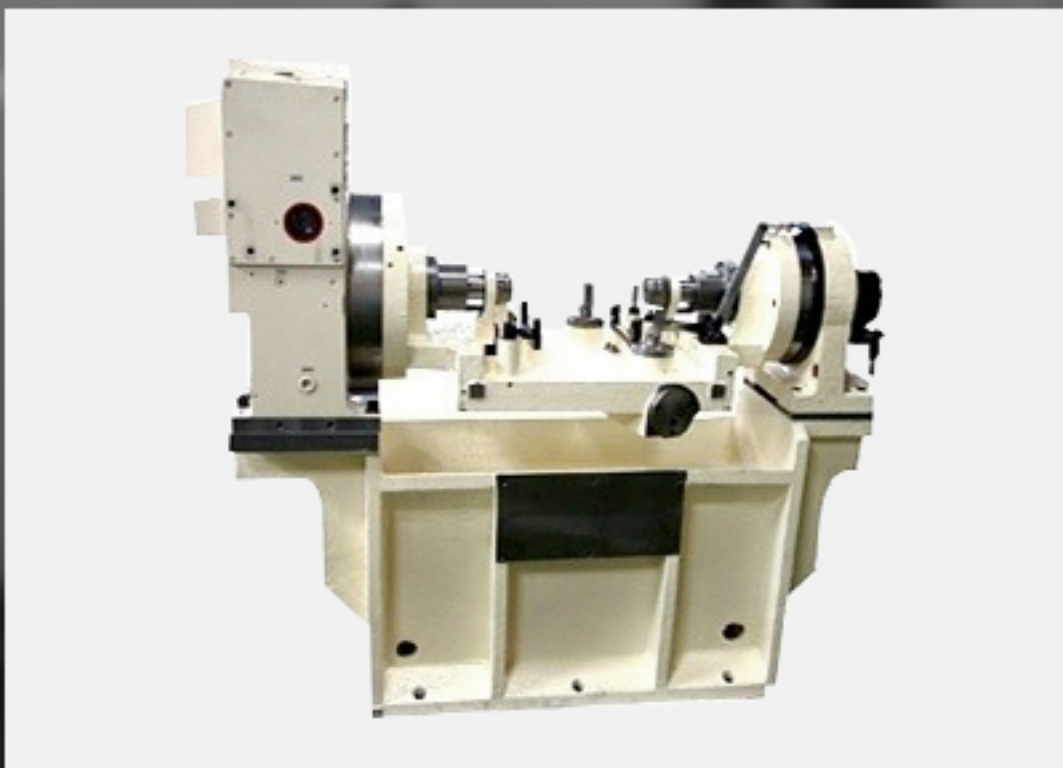
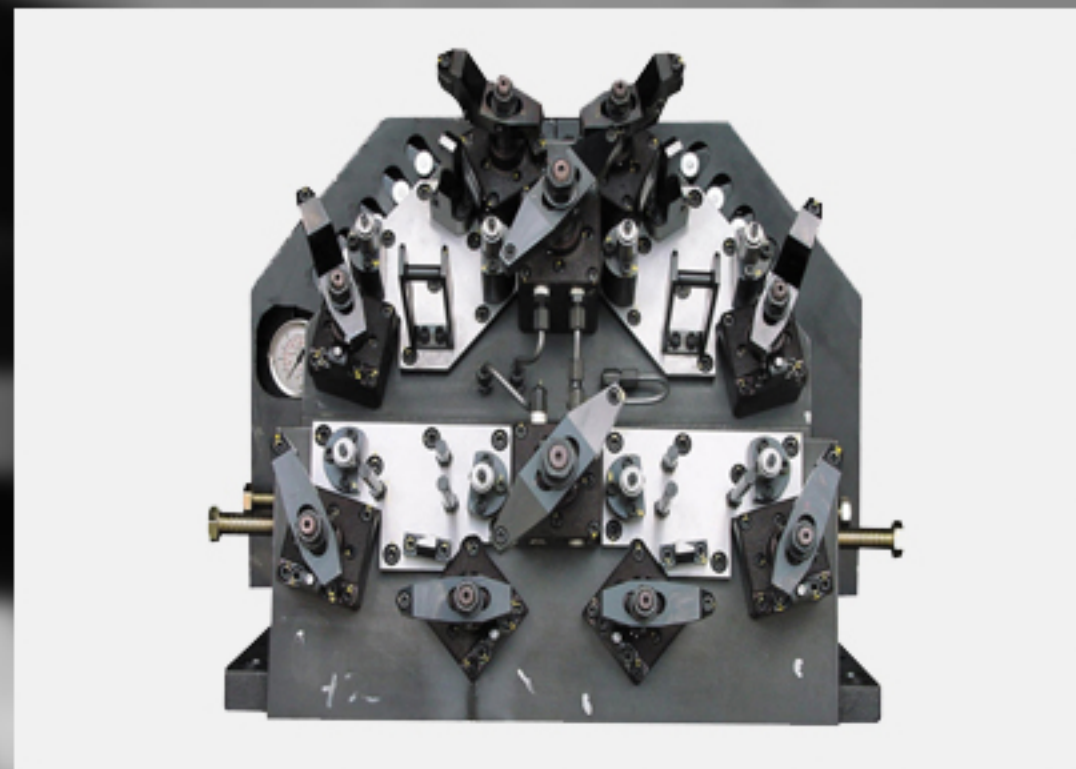
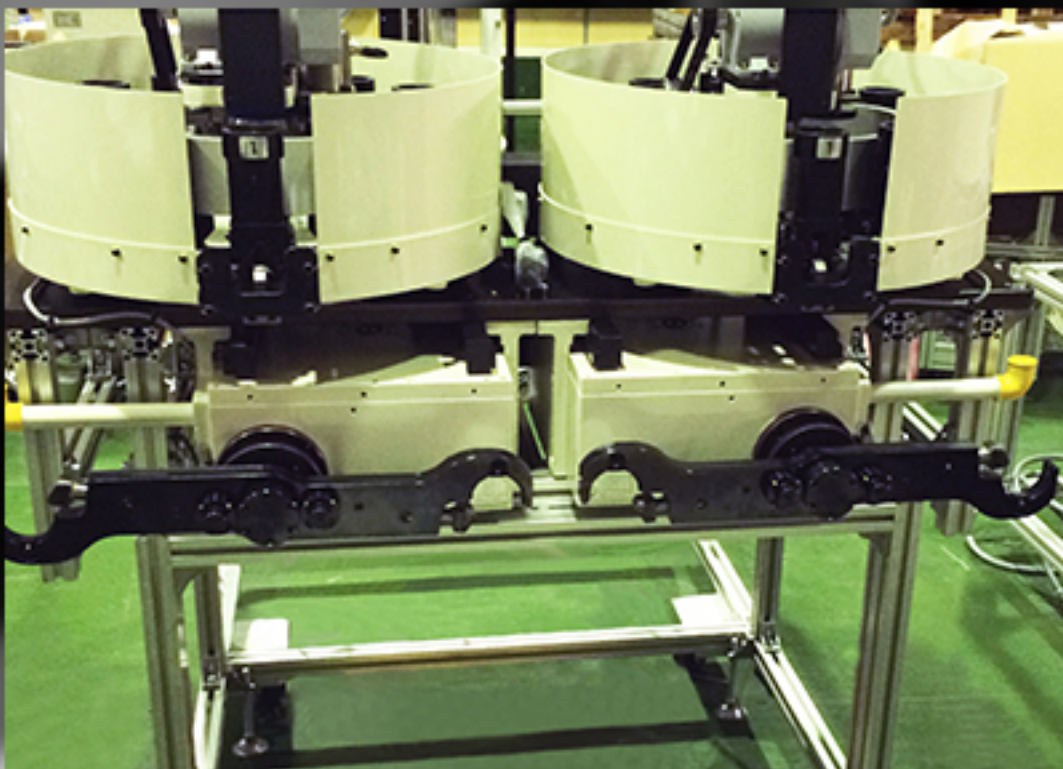
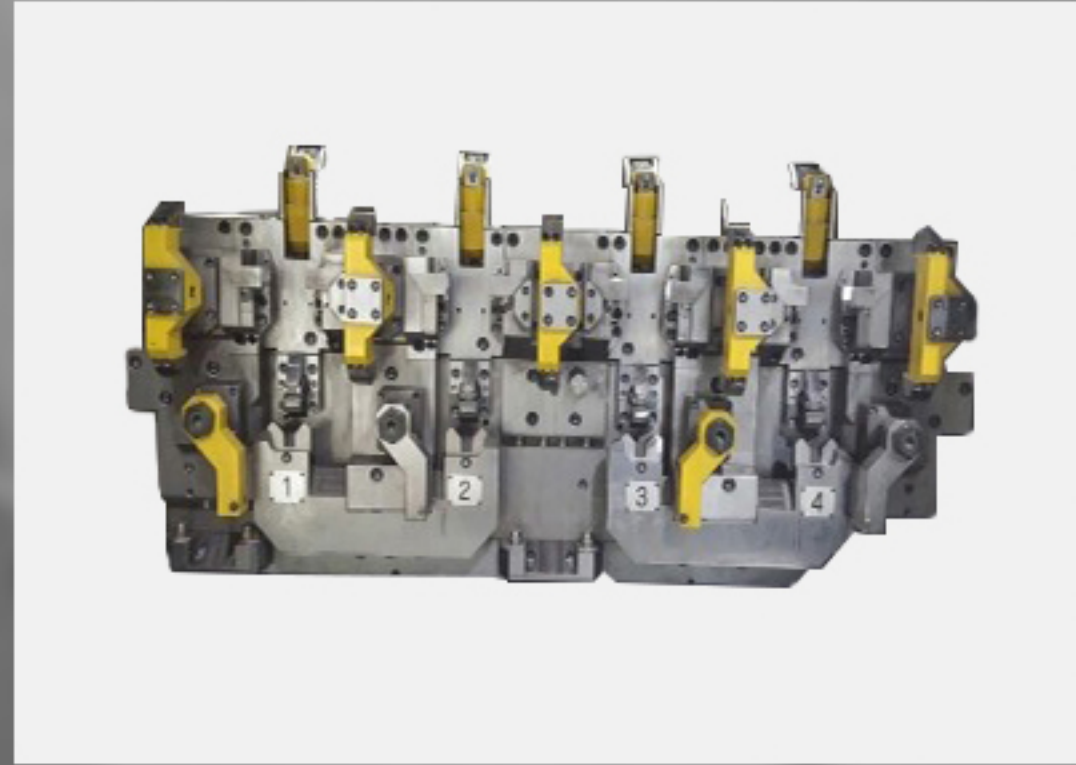
Product List







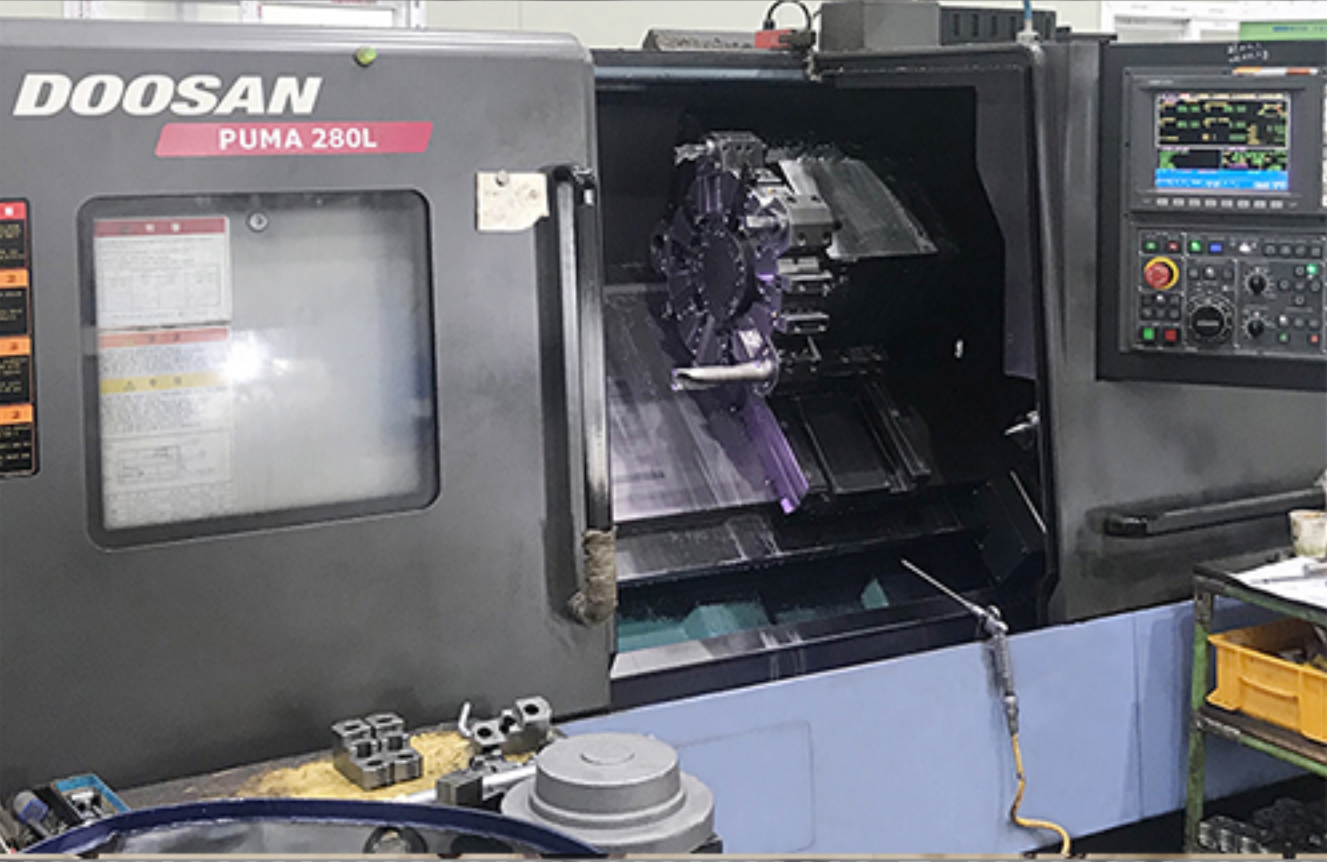
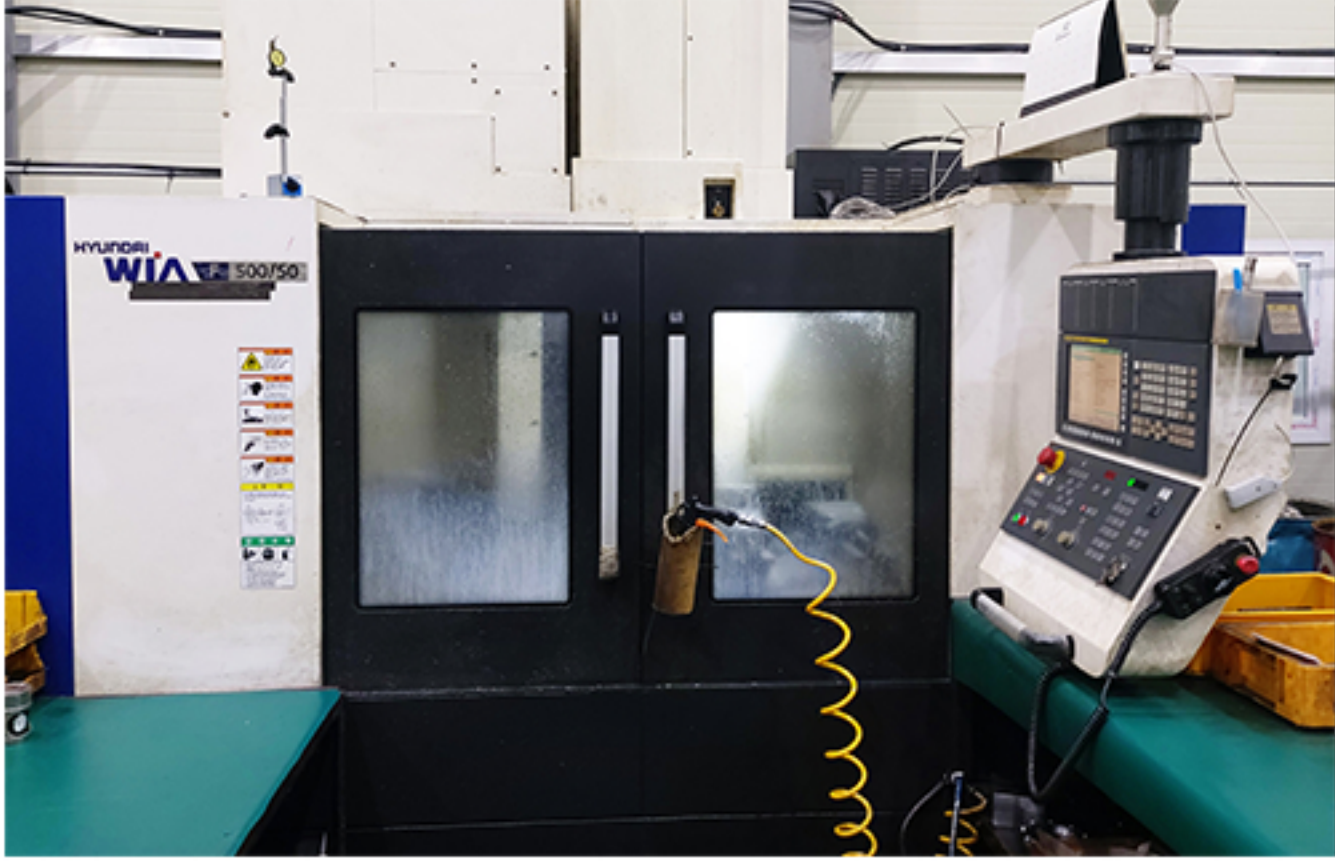
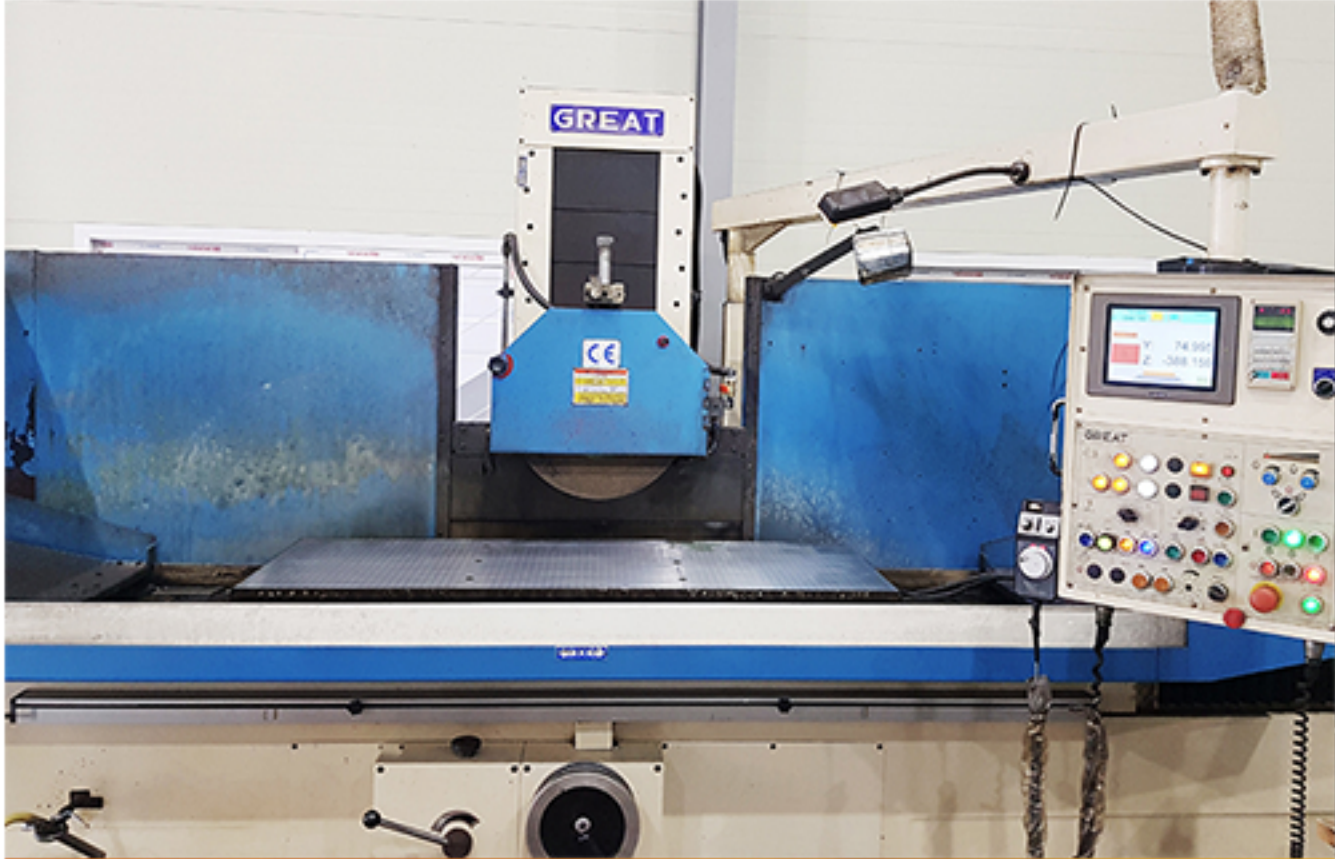
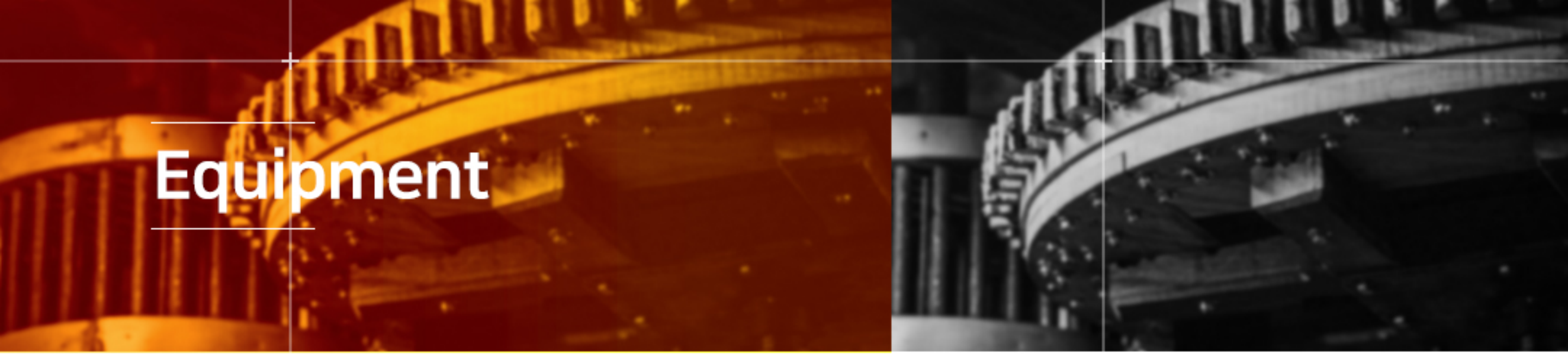
SUB ASSY



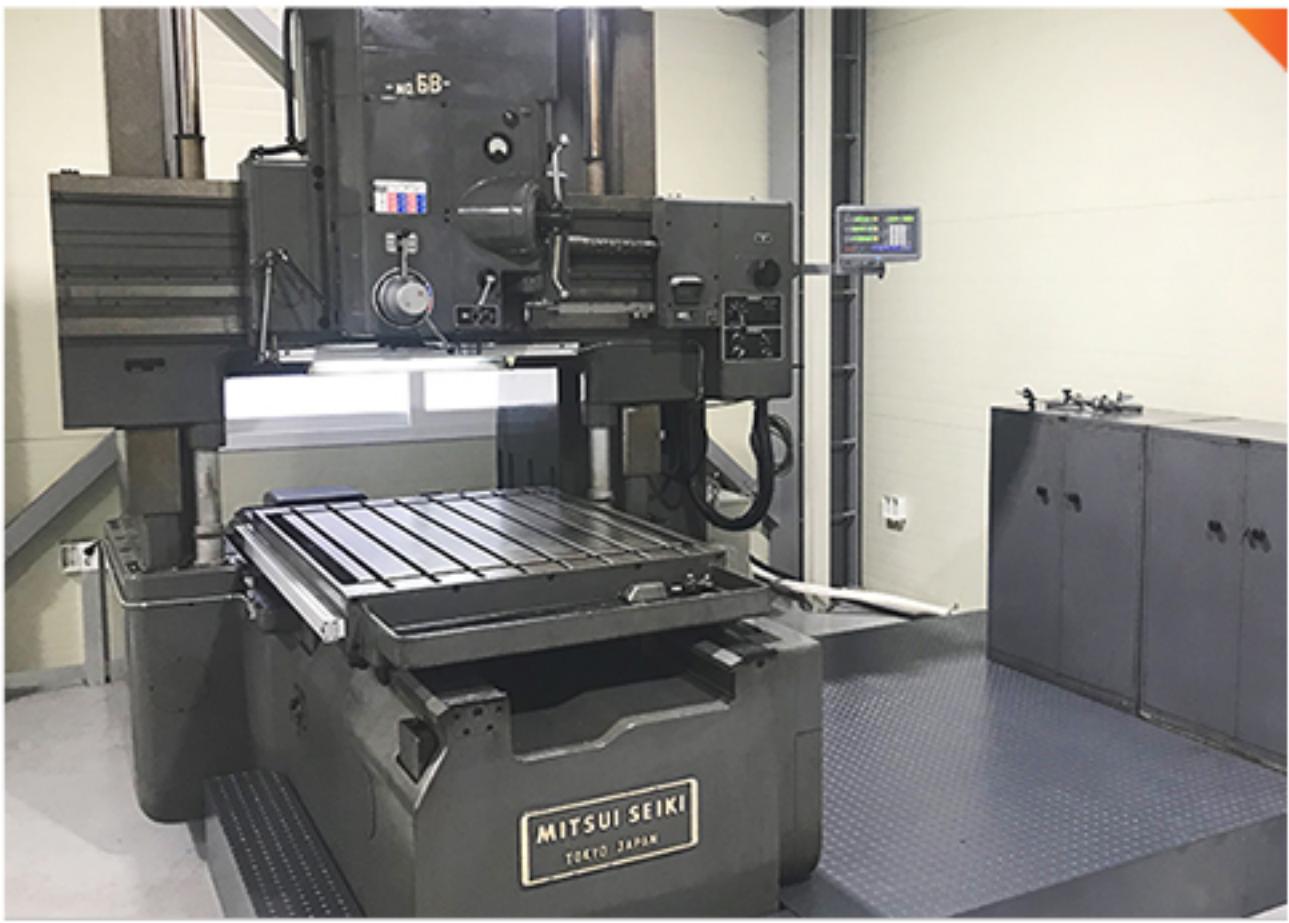
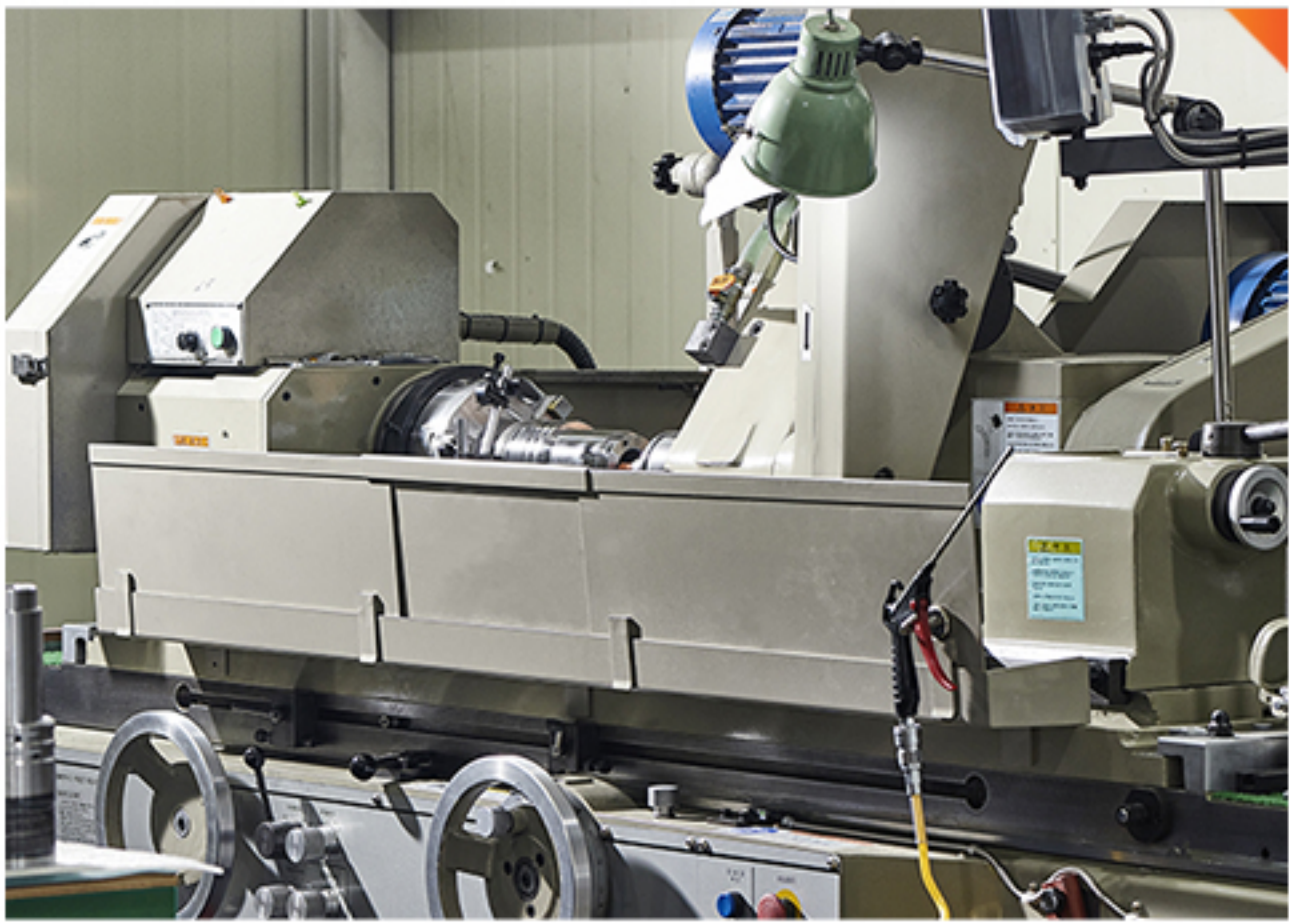
Assembly Technology Based on Precision Machining

Precision Parts-Machining Technology for parts Assembly of machine Tools and JIG FIXTURE of Exclusive-use Machines

Manufacturing SUB ASSY(Rests, APC, ATC for machine Tools), JIG, Machining / Assembling Exclusive-use Line Products Customized products to meet a variety of Customers Needs.



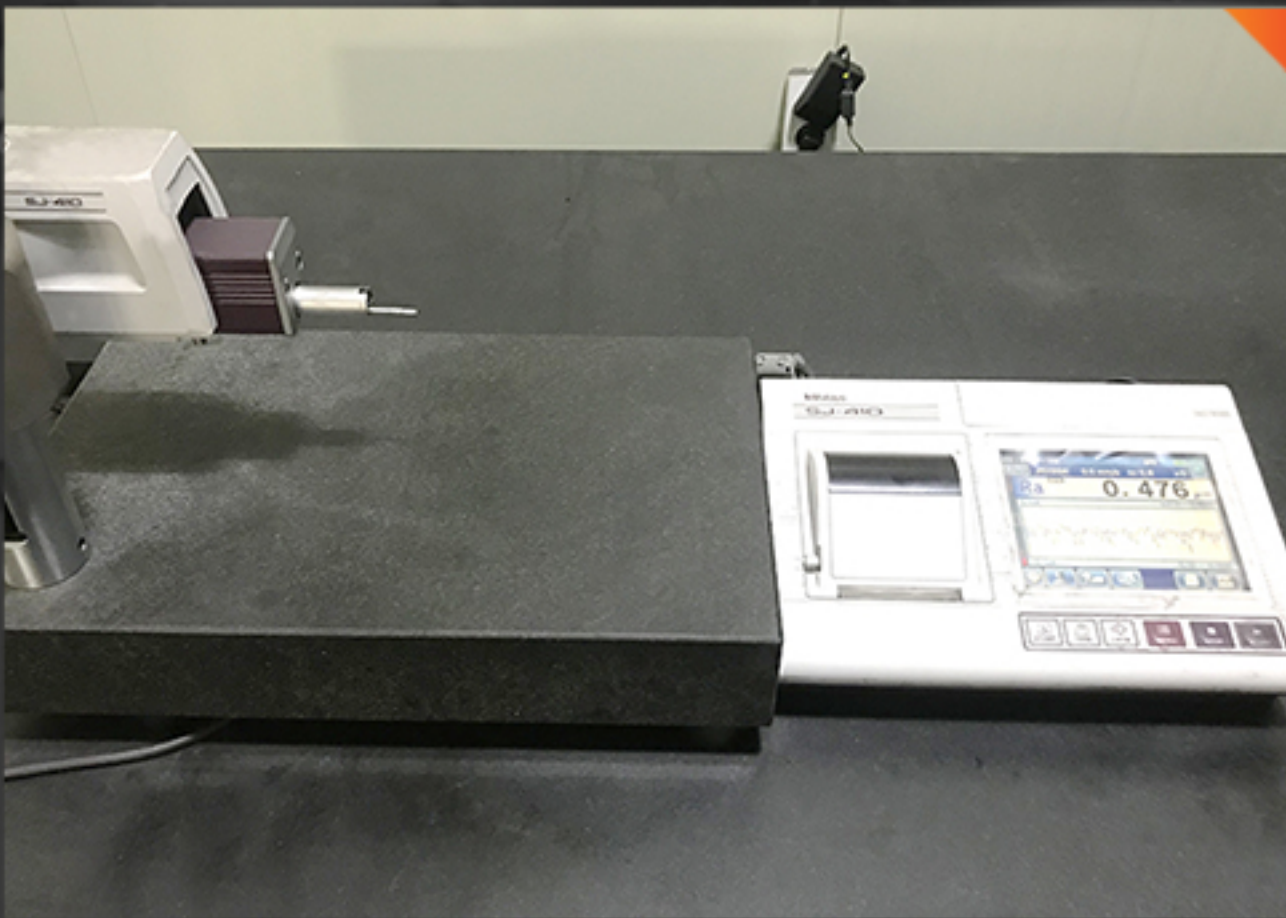
| Model | Specification (Manufacture Range) | Set | Maker |
|----------------------------------|-----------------------------------|-----|--------|
| Machining Center(Vertical) | 1,350 x 650 | 3 | WIA |
| Machining Center(Vertical) | 1,050 x 520 | 2 | WIA |
| CNC Lathe | CNC 6"(Ø150 x 300) | 1 | MAZAK |
| CNC Lathe | CNC 8"(Ø205 x 300) | 1 | MAZAK |
| CNC Lathe | CNC 10"(Ø300 x 300) | 1 | DOOSAN |
| Surface Grinder | 600 x 1,500 x 520 | 1 | GREAT |
| Surface Grinder | 600 x 2,000 x 520 | 1 | GREAT |
| Surface Grinder | 800 x 2,000 x 520 | 1 | GREAT |
| Inner and Outer Diameter Grinder | Ø340 x 1,000 | 2 | TIC |



| Model | Specification (Manufacture Range) | Set | Maker |
|---|---|-----|---------------|
| JIG Boring Machine (Vertical) | 760 x 1,020 x 800 (Quill 250mm) | 1 | MITSUI SEIKI |
| Vacuum Package Machine | For 1 Cavity and 2 Cavity (1set/each) (For Rust-proofing & Shipment) | 1 | DAEWON |
| Forklift | 1 ton | 1 | MITSUBISHI |
| Crane | 1 ton (Measurement Room), 2.8 ton (Field Use) | 1 | Made in Korea |
| Constant Temperature and humidity Machine | 265m ² (Measurement Room) | 1 | Century |

Measuring Instrument





| Model | Specification | Set | Maker |
|------------------------------------|--------------------|-----|----------|
| 3D Measuring Instrument | 900*1,600*600 | 1 | MITUTOYO |
| 2D Measuring Instrument | flyer_vectra-touch | 1 | TRIMOS |
| Hardness Tester | 810-299-10 | 1 | MITUTOYO |
| Bench Center | 80771 | 1 | OMEGA |
| Granite Plate | 1,000*750 | 1 | JUNGWON |
| Granite Plate | 1,500*2,000 | 1 | MIKRD |
| Surface roughness measuring device | SJ-310 | 1 | MITUTOYO |
| Screw Gauge | Various | 1 | JPG |
| Pin Gauge | Various | 1 | |
| PT Plug Gauge | Various | 1 | OJIYAS |

| Model | Specification | Set | Maker |
|--|-------------------------|-----|----------|
| Micro Meter (Depth) | 3 Types | 1 | MITUTOYO |
| Inside Caliper | 2 Types | 1 | MITUTOYO |
| External Diameter Micrometer (Digital) | 3 Types | 1 | MITUTOYO |
| Ring Gauge | Various | 1 | |
| Bore Gauge | 3 Types | 1 | MITUTOYO |
| Block Gauge (Level 0) | 516-942Z-10 (103 Types) | 1 | MITUTOYO |
| Blade Micro | 4 Types | 1 | MITUTOYO |
| Cylinder Gauge | 7 Types | 1 | MITUTOYO |
| External Diameter Micrometer | 10 Types | 1 | MITUTOYO |
| Indicator | 3 Types | 1 | MITUTOYO |

www.wjtkorea.com



WJT_LINE Code



WJT_Youtube



**We aim to be a company where those
who make an effort become happy.**

WJT Co.,Ltd.

78, Seongseo4chacheomdan-ro, Dalseo-gu
Daegu, 42724, Rep. of KOREA

Tel : +82-53-568-2410

Fax : +82-53-289-2410

Email : info@wjtkorea.com